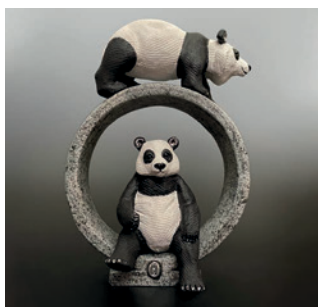




## Jewellery & Silversmithing Fair



## CELEBRATING ceramics

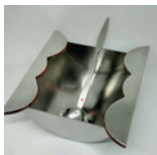


# Exhibitor Listing for download

by stand number

Waterperry Gardens 19 – 21 July 2024

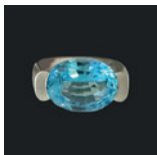
## A01 Trish Woods Design Metals



Contemporary pewter giftware and jewellery.

[www.trishwoodsdesignmetals.com](http://www.trishwoodsdesignmetals.com)

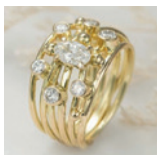
## A02 Oddie & Hope Jewellery



Bold, modern jewellery handmade using traditional silversmithing methods.

[www.oddieandhope.com](http://www.oddieandhope.com)

## A03 Angela Evans Jewellery



Sterling silver and gold, mostly stone set jewellery inspired by water.

[www.angela-evans.co.uk](http://www.angela-evans.co.uk)

## A04 Barnabas Taylor



Unique silverware inspired by the beauty and history of Cornwall.

[www.barnabastaylor.co.uk](http://www.barnabastaylor.co.uk)

## A05 Joanne Gowan Fine Artist Jeweller



Handmade precious jewellery, bespoke and one-offs, gold, platinum, palladium,

silver and gemstones.

[www.gowanjewellers.co.uk](http://www.gowanjewellers.co.uk)

## A06 Brian Eburah



A selection of jewellery items combining niobium and titanium with precious metals and stones.

[www.brianeburah-niobium.com](http://www.brianeburah-niobium.com)

## A07 Suzie Jasper



Handcrafted ceramic sculptures and jewellery.

[www.suziejasper.co.uk](http://www.suziejasper.co.uk)

## A08 Lisa Marie Designer Goldsmith



A commission based goldsmith with over 30 years working direct with the mining industry and maintaining ethical practices.

[www.designergoldsmith.co.uk](http://www.designergoldsmith.co.uk)

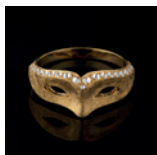
## A09 Amanda Ray Raku Jewellery



Art deco inspired, raku fired ceramic jewellery.

[www.amandaray.co.uk](http://www.amandaray.co.uk)

## A10 Imaginarium Atelier



Sculptural and poetic pieces fusing traditional goldsmithing and art jewellery.

[www.imaginariumatelier.com](http://www.imaginariumatelier.com)

## A11 Tanja Ufer Jewellery



Sculptural silver and gold jewellery with colourful gemstones.

[www.tanja-ufer.co.uk](http://www.tanja-ufer.co.uk)

## A12 Anna K Baldwin



Beautiful handmade jewellery with an organic, tactile feel.

[www.annakbaldwin.co.uk](http://www.annakbaldwin.co.uk)

## A13 Beverly Bartlett



silver'.

Contemporary sterling silver and gold jewellery made with the concept 'science in

[www.bmbjewellery.co.uk](http://www.bmbjewellery.co.uk)

## A14 Annakin Jewellery



Limited collections and bespoke repurposing work from hallmarked solid silver, 9ct

and 8ct gold where elegance and simplicity combine with the strength for a lifetime of wearing.

[www.annakinjewellery.co.uk](http://www.annakinjewellery.co.uk)

## A15 Loucinda Nims Designs



Contemporary functional silverware that is beautiful to use as well as to look at.

[www.loucindanims.com](http://www.loucindanims.com)

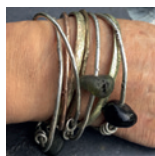
## A16 Stavros Constantinou



Organic and tactile work which is bold and free in style.

[www.stavrosconstantinou.co.uk](http://www.stavrosconstantinou.co.uk)

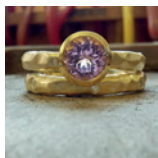
## A17 Donna Collinson Jewellery



Solid silver, bronze and gold jewellery inspired by our beaches and landscape.

[www.donnacollinson.co.uk](http://www.donnacollinson.co.uk)

## A18 Deborah Kelly-Hopkins



Silver, gold and mixed metal silver and gold pieces with hammered textures. Gems and diamonds

set in rings.

[www.dkhjewellery.co.uk](http://www.dkhjewellery.co.uk)

## A19 Charlie High Designs



Bold, textured pieces using mixed metals and semi-precious stones.

[www.charliehigh.com](http://www.charliehigh.com)

## A20 Francesca Marcenaro



Handmade unusual jewellery inspired by fairytales and nature.

[www.francescamarcenaro.com](http://www.francescamarcenaro.com)

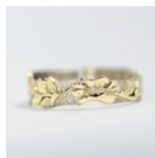
## A21 Fenella Watson Designs



Contemporary silverware for the modern age and home.

[www.fenellawatson.com](http://www.fenellawatson.com)

## A22 Tamsin Francesca Jewellery



Intricate gold and silver jewellery combining goldsmithing and textile skills,

specifically lace making and crochet.

[www.tamsinfrancesca.co.uk](http://www.tamsinfrancesca.co.uk)

## A23 Alexandra Arum



Unique handmade jewellery using precious stones which I set myself.

[www.alexandraaurum.com](http://www.alexandraaurum.com)

## A24 Cathy Timbrell Jewellery



Silver jewellery incorporating texture, semi-precious stones, gold, diamonds and enamel.

[www.cathytimbrelljewellery.co.uk](http://www.cathytimbrelljewellery.co.uk)

## A25 Grant Forsyth Jewellery Design



Handmade silver, gold and gemstone textural jewellery.

[www.grantforsythjewellery.com](http://www.grantforsythjewellery.com)

## A26 Alexandra Simpson



Delicate and enchanting fine jewellery made with love inspired by the beauty of nature and the

fantasy of art nouveau.

[www.alexandrasimpson.com](http://www.alexandrasimpson.com)

## B27 Quo Vadis Jewellery



Fine bespoke jewellery in gold, silver and platinum.

[www.quovadisjewellery.co.uk](http://www.quovadisjewellery.co.uk)

## B28 Claire Quick Jewellery



My work is inspired by nature and the natural forms we see around us such as the patterns in bark

and lichen. These are interpreted with the use of lost wax casting.

[www.clairequickjewellery.com](http://www.clairequickjewellery.com)

## B29 Lavan Designer Jewellery



Handmade gold and silver jewellery set with precious and semi-precious stones.

[www.lavanjewellery.co.uk](http://www.lavanjewellery.co.uk)

## B30 Bishopsland Educational Trust



Contemporary silversmithing and jewellery.

[www.bishopsland.org.uk](http://www.bishopsland.org.uk)

## B31 Esther Eyre



Contemporary classic jewellery with colourful gemstones. Natural world inspiration.

[www.esthereyre.com](http://www.esthereyre.com)

## B32 Dee Ayles Jewellery



Contemporary silver and gold jewellery with semi-precious stones and pearls, nature inspired.

[www.deeaylesjewellery.co.uk](http://www.deeaylesjewellery.co.uk)

## B33 Emma Keating Jewellery



Animal and nature themed jewellery and ornaments in silver and gold.

[www.emmakeatingjewellery.co.uk](http://www.emmakeatingjewellery.co.uk)

## B34 Malcolm Morris



A selection of handmade silver and gold jewellery using precious stones and enamelling.

[www.malcolm-morris.com](http://www.malcolm-morris.com)

## B35 Phoenix-Tree Jewellery



Intricate jewellery and miniature ornaments inspired by creatures and nature.

[www.phoenix-tree.co.uk](http://www.phoenix-tree.co.uk)

## B36 Barbara Ehlers Silversmith

Sterling silver and gold dishes, spoons, gifts and jewellery.

[www.barbaraehlers.co.uk](http://www.barbaraehlers.co.uk)

## **B37 Sandra Elizabeth**



Silver and gold, organic forms with flowing lines, silver and oxidised finishes.

[www.sandraelizabeth.com](http://www.sandraelizabeth.com)

---

## **B38 Michele**



Handmade jewellery in precious metals set with precious and semi-precious gemstones.

[www.michelewhite.com](http://www.michelewhite.com)

---

## **B39 Photofinish Jewellery**



Colourful jewellery created from photographs celebrating nature at its best.

[www.photofinish-jewellery.com](http://www.photofinish-jewellery.com)

---

## **B40 Amelia Appleby**



Contemporary jewellery featuring shiny gemstones.

[www.ameliaappleby.co.uk](http://www.ameliaappleby.co.uk)

---

## **B41 Heather Larson Jewellery**



Contemporary jewellery and objets d'art in silver and enamel with hand engraving.

[www.heatherlarsonjewellery.co.uk](http://www.heatherlarsonjewellery.co.uk)

---

## **B42 Scarlett Willow Designs**



Handmade silver and gold jewellery inspired by nature and the natural world.

[www.scarlettwillowdesigns.co.uk](http://www.scarlettwillowdesigns.co.uk)

---

## **B43 Helen Brice Designs**



Colourful precious gemset jewellery in gold, silver and platinum. Commissions

welcome.

[www.helenbrice.co.uk](http://www.helenbrice.co.uk)

---

## **B44 Mary Mary**



Beautifully set semi-precious gemstones intricately wired together with gold and silver creating a

unique, colourful and very tactile range of jewellery.

[www.mary-mary.net](http://www.mary-mary.net)

---

## **B45 MH Goldsmith**



Handmade contemporary jewellery.

[www.mhgoldsmith.uk](http://www.mhgoldsmith.uk)

---

## **B46 Lizzie Kershaw Jewellery**



Elegant handmade silver and gold jewellery inspired by natural forms.

[www.lizziekershaw.co.uk](http://www.lizziekershaw.co.uk)

---

## B47 Rosimorosi



Surface pattern design applied to aluminium jewellery.

[www.rosimorosi.com](http://www.rosimorosi.com)

## B48 Alison Haddon



Story telling jewellery collections using silver, enamel and gemstones inspired by walks in the Sussex countryside.

[www.alisonhaddon.com](http://www.alisonhaddon.com)

## B49 Chris Boland



Sculptural contemporary jewellery handmade from precious metals and unique gemstones.

[www.chrisbolanddesigns.com](http://www.chrisbolanddesigns.com)

## C50 Magwitchery



Silver, gold and gemstone jewellery inspired by history and nature.

[www.magwitchery.co.uk](http://www.magwitchery.co.uk)

## C51 Lilly Hastedt



Classic contemporary fine jewellery inspired by flora and fauna using precious metals and gemstones and pearls from all around the world.

[www.lillyhastedt.com](http://www.lillyhastedt.com)

## C52 DeMEC Jewellers



Vegetable ivory jewellery, diamonds, gold, pearls and silver.

[www.demecjewellers.com](http://www.demecjewellers.com)

## C53 Kate Lewis



Contemporary jewellery inspired by the British coast.

[www.katelewisjewellery.co.uk](http://www.katelewisjewellery.co.uk)

## C54 Liz Tyler Designs



Sculptural jewellery and silver - flowing designs frequently set with fabulous gemstones.

[www.liztyler.com](http://www.liztyler.com)

## C55 Pottering Shed Beads



Artisan lampwork beads made into lanyards for glasses, earrings and keyrings.

[www.potteringshedbeads.co.uk](http://www.potteringshedbeads.co.uk)

## C56 Jonathan Lerer



One of a kind jewellery.

[www.jonathanlerer.com](http://www.jonathanlerer.com)

## C57 Brett Payne



Hot forged silver tableware and candlesticks.

[www.brettpayne.com](http://www.brettpayne.com)

## C58 GP Jewellery Design

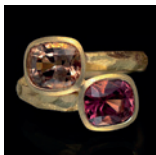


Handcrafted gold and silver jewellery designed by using traditional techniques

inspired from natural forms and ancient arts.

[www.gamzopolat.co.uk](http://www.gamzopolat.co.uk)

## C59 Scarab London



Platinum 18 ct gold and silver jewellery designed by us using gemstones cut and polished.

[www.scarablondon.com](http://www.scarablondon.com)

## C60 Emily Thatcher



Sculptural, precious metal and gemset jewellery.

[www.emilythatcher.co.uk](http://www.emilythatcher.co.uk)

## C61 Kathryn Arbon Jewellery



Silver and gold jewellery.

[www.kathrynarbon.co.uk](http://www.kathrynarbon.co.uk)

## C62 Xuella Arnold Jewellery



Silver, bronze and gold contemporary jewellery and silversmithing.

[www.xuella.co.uk](http://www.xuella.co.uk)

## C63 Simone Micallef, Designer Jeweller



Handmade, hallmarked designer jewellery of mainly bold statement piece necklaces of

natural stones and silver.

[www.simonemicallef.com](http://www.simonemicallef.com)

## C64 Rebecca Burt Jewellery



Textural organic jewellery from silver and gold featuring carefully selected gemstones and

playful colour gradients.

[www.rebeccaburtjewellery.com](http://www.rebeccaburtjewellery.com)

## C65 Heather Stowell



Eclectic mix of one off pieces incorporating collectable antique charms and buttons. Commissions

welcomed in gold and silver.

[www.heatherstowell.com](http://www.heatherstowell.com)

## C66 Von W Fine Jewellery



I make precious but raw jewellery using both silver and gold. I prefer working in 18k gold due to its

ability to fuse well. My designs are process driven and intuitive.

[www.vonwjewellery.com](http://www.vonwjewellery.com)

## C67 Tine Bladbjerg



Simple and elegant silver and 18ct gold jewellery often enhanced by gemstones.

[www.tinebladbjerg.com](http://www.tinebladbjerg.com)

## C68 Sally Ratcliffe



Silver and gold jewellery displayed with silver sculptural pictures and sculptures.

[www.sallyratcliffe.co.uk](http://www.sallyratcliffe.co.uk)

## C69 Camilla West



Raw, textural pieces, fabulous freeform gemstones, recycled silver and gold.

[www.camillawest.com](http://www.camillawest.com)

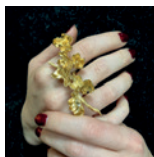
## C70 Kim Styles Jewellery



Sculptural botanical statement necklaces and floral gemstone rings in gold and silver.

[www.kimstylesjewellery.com](http://www.kimstylesjewellery.com)

## C71 Lauren Bell-Brown Jewellery



Predominantly using lost wax casting techniques, Lauren creates unique jewellery. Each

piece is embellished with ethically sourced gemstones, in a plethora of colours. Lauren draws inspirations from Grimm's Brothers fairytales.

[www.laurenbellbrown.co.uk](http://www.laurenbellbrown.co.uk)

Alexandra Arum.....	A23	Kate Lewis.....	C53
Alexandra Simpson.....	A26	Kathryn Arbon Jewellery .....	C61
Alison Haddon.....	B48	Kim Styles Jewellery .....	C70
Amanda Ray Raku Jewellery.....	A09	Lauren Bell-Brown Jewellery.....	C71
Amelia Appleby .....	B40	Lavan Designer Jewellery.....	B29
Angela Evans Jewellery.....	A03	Lilly Hastedt .....	C51
Anna K Baldwin .....	A12	Lisa Marie Designer Goldsmith ..	A08
Annakin Jewellery .....	A14	Liz Tyler Designs .....	C54
Barbara Ehlers Silversmith.....	B36	Lizzie Kershaw Jewellery.....	B46
Barnabas Taylor.....	A04	Loucinda Nims Designs.....	A15
Beverly Bartlett .....	A13	Magwitchery .....	C50
Bishopsland Educational Trust...	B30	Malcolm Morris .....	B34
Brett Payne .....	C57	Mary Mary .....	B44
Brian Ebrah.....	A06	MH Goldsmith.....	B45
Camilla West.....	C69	Michele.....	B38
Cathy Timbrell Jewellery .....	A24	Oddie & Hope Jewellery.....	A02
Charlie High Designs.....	A19	Phoenix-Tree Jewellery .....	B35
Chris Boland .....	B49	Photofinish Jewellery .....	B39
Claire Quick Jewellery .....	B28	Pottering Shed Beads.....	C55
Deborah Kelly-Hopkins.....	A18	Quo Vadis Jewellery .....	B27
Dee Ayles Jewellery .....	B32	Rebecca Burt Jewellery .....	C64
DeMEC Jewellers.....	C52	Rosimorosi.....	B47
Donna Collinson Jewellery .....	A17	Sally Ratcliffe .....	C68
Emily Thatcher .....	C60	Sandra Elizabeth .....	B37
Emma Keating Jewellery .....	B33	Scarab London.....	C59
Esther Eyre.....	B31	Scarlett Willow Designs.....	B42
Fenella Watson Designs.....	A21	Simone Micallef,	
Francesca Marcenaro.....	A20	Designer Jeweller .....	C63
GP Jewellery Design.....	C58	Stavros Constantinou.....	A16
Grant Forsyth Jewellery Design..	A25	Suzie Jasper .....	A07
Heather Larson Jewellery .....	B41	Tamsin Francesca Jewellery.....	A22
Heather Stowell .....	C65	Tanja Ufer Jewellery .....	A11
Helen Brice Designs.....	B43	Tine Bladbjerg .....	C67
Imaginarium Atelier .....	A10	Trish Woods Design Metals.....	A01
Joanne Gowan		Von W Fine Jewellery .....	C66
Fine Artist Jeweller.....	A05	Xuella Arnold Jewellery.....	C62
Jonathan Lerer.....	C56		



# CELEBRATING ceramics

## A001 Tony Laverick Ceramics



Porcelain decorated vessels using glazes, slips and metals in multiple firings.

[www.tonylaverick.co.uk](http://www.tonylaverick.co.uk)

## A002 Alchemy Tiles



Individually hand carved encaustic, inlaid tiles with inspiring poetry, quotes and images

using ancient 13th Century techniques held eternally in earth and time.

[www.alchemytiles.com](http://www.alchemytiles.com)

## A003 Penny Withers Ceramics

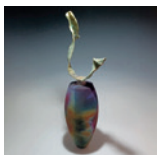


I enjoy the energy in thrown clay slabs and the melting and fusing of glazes that happens in

the kiln.

[www.pennywithersceramics.co.uk](http://www.pennywithersceramics.co.uk)

## A004 Andrew Niblett Raku Potter



Raku fired sculptural forms with recovered relics.

[www.andrewniblettrakupotter.co.uk](http://www.andrewniblettrakupotter.co.uk)

## A005 Jeremy Nichols Ceramics

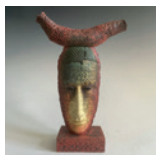


Salt glazed domestic ceramics with a focus on teapots featuring open handles

together with bottles and lidded jars and boxes.

[www.jeremynichols.co.uk](http://www.jeremynichols.co.uk)

## A006 Neil MacDonell



My work is inspired by textures, patterns and forms derived from found industrial

detritus.

[www.macdonell-ceramics.co.uk](http://www.macdonell-ceramics.co.uk)

## A006a Sally MacDonell



Modelling spontaneously with slabs and coils, each piece is unique, expressing an underlying

sense of warmth and humanity.

[www.macdonell-ceramics.co.uk](http://www.macdonell-ceramics.co.uk)

## A007 Craig Underhill



A painterly approach to ceramics that evokes a feeling of place and landscape.

[www.craigunderhill.co.uk](http://www.craigunderhill.co.uk)

## **A008 Patricia Millar Ceramics**



Pottery that captures the ancestry, texture and colour signature of the landscape

using local clay and ash glaze.

[www.patriciamillarceramics.com](http://www.patriciamillarceramics.com)

---

## **A009 Guy Routledge Ceramics**



Hand-built figurative and sculptural ceramics based loosely around the head and face; plus

various animal forms.

[www.guyroutledgeceramics.com](http://www.guyroutledgeceramics.com)

---

## **A010 Adrian Bates Ceramics**



Elegant and timeless stoneware ceramics for home and year-round garden display.

[www.adrianbatesceramics.com](http://www.adrianbatesceramics.com)

---

## **A011 Jane Staniland**



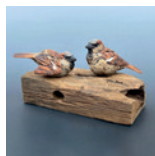
These coiled stoneware planters and pots tell joyful stories. The surface is sgraffito,

coloured slips, oxides, glazes and sometimes lustres.

[www.janestaniland.com](http://www.janestaniland.com)

---

## **A012 Simon Griffiths Sculpture**



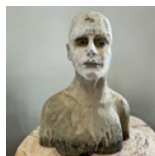
Unique impressionistic wildlife sculptures capturing the true essence of British Birds

and animals. Simon's work is fired to stoneware temperatures and suitable for garden or interior display.

[www.simongriffithssculpture.co.uk](http://www.simongriffithssculpture.co.uk)

---

## **B013 Studio Skellett**



Expressive figurative sculptures of the human form.

[www.studioskellett.com](http://www.studioskellett.com)

---

## **B015 June Dobson Ceramics**



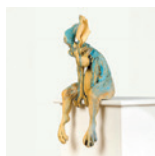
Slab built decorative and functional stoneware ceramics. Using sgraffito and relief

techniques and finished with oxide and minimal glaze.

[www.junedobsonceramicartist.com](http://www.junedobsonceramicartist.com)

---

## **B016 Lucy Morris Ceramic Art**



Hand built expressive animal sculptures taking inspiration from human

emotions.

[www.lucymorrisceramicart.co.uk](http://www.lucymorrisceramicart.co.uk)

---

## **Bo17 Emily Dennys Ceramics**



Handmade Porcelain Lamps, Vases and Wall Panels featuring relief casts of Flowers,

Grasses, Thistles and Ferns.

[www.emilydennysceramics.com](http://www.emilydennysceramics.com)

---

## **Bo18 Tim Kennedy Ceramics**



Decorative hand built ceramic vessels inspired by texture and forms found in nature.

[www.timkennedyceramics.co.uk](http://www.timkennedyceramics.co.uk)

---

## **Bo19 Emma Baldwin Ceramics**



Wheel thrown stoneware vessels exploring classical and contemporary forms in

combination with reactive glazes and oxides.

[www.emmabaldwinceramics.co.uk](http://www.emmabaldwinceramics.co.uk)

---

## **Bo20 Ruth Gibson Ceramics**



Working in porcelain and white stoneware, Ruth combines a love of photography,

printmaking and ceramics, to evoke a sense of place.

[www.ruthgibsonceramics.co.uk](http://www.ruthgibsonceramics.co.uk)

---

## **Bo21 Trevor Dyer Ceramics**



Trevor produces hand-thrown functional and decorative pieces in reduction fired stoneware and

porcelain. He strives to make things which are both deeply satisfying to use and a joy to behold.

[www.trevordyerceramics.co.uk](http://www.trevordyerceramics.co.uk)

---

## **Bo22 Vladka Thwaites**



Vladka Thwaites creates ceramic works adorned with a palimpsest of textures and

abstracted motifs exploring memories, dreams and the subconscious.

[www.vladkathwaitesceramics.com](http://www.vladkathwaitesceramics.com)

---

## **Bo23 Judit Esztergomi Ceramics**



Wheel-thrown functional ceramics decorated by hand-carving.

[www.juditesztergomiceramics.com](http://www.juditesztergomiceramics.com)

---

## **Bo24 Liz Watts**



Hand built Sculptures, vessels or combinations, primarily in porcelain, freehand

painted, often colourfully, some with gold, platinum or lustre fired on the glaze. Each piece unique in form and colour.

[www.lizwatts.co.uk](http://www.lizwatts.co.uk)

---

## Bo25 Jane Cox Ceramics

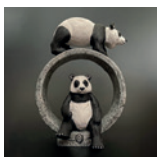


Jane Cox (MARCA, AWG, CPA Fellow) is known for her elegant ceramics combining

distinctive surface pattern with classic shapes. Having worked in London for 20 years she now pots from the well established Binnel Studios on the Isle of Wight.

[www.janecoxceramics.com](http://www.janecoxceramics.com)

## Bo26 Gin Durham Ceramics



The inspiration for Gin's ceramic sculptures stems from storytelling. She draws on

an imagination shaped by treasured tales and imagery.

[www.gindurhamart.co.uk](http://www.gindurhamart.co.uk)

## Bo27 Candice Coetser Ceramics



Thrown porcelain and stoneware inspired by natural landscapes. Wall pieces

with litho printed photos.

[www.burntearthstudio.com](http://www.burntearthstudio.com)

## Bo28 Andrew Hazelden



Functional and ceremonial tin glaze and reduction fired earthenware, brush painted with symbolic

designs inspired by the natural world

[www.andrewhazelden.co.uk](http://www.andrewhazelden.co.uk)

## Bo29 Alison Wear Ceramics



Smoke and raku fired stoneware inspired by zoomorphic forms. Each piece is hand built, burnished

and unique.

[www.alisonwearsceramics.com](http://www.alisonwearsceramics.com)

## Bo30 Hiro Takahashi



Intricate & narrative sculpture: Soul house, Tree of life, Allegorical boat, Tower of Myth, Message

box and functional Wabi-Sabi ware."

[www.hirotakahashi.co.uk](http://www.hirotakahashi.co.uk)

## Bo31 Deborah Harwood Ceramics



Wheel thrown porcelain working to purity of form and line to enhance the inherent beauty

of the clay.

[www.deborahharwood.com](http://www.deborahharwood.com)

## **B032 David Chilton**

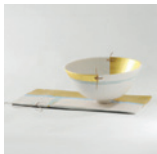


Hand-built porcelain, inspired by myth & history. Informed by touch allowing the beauty of the material to shine through.

[www.davidchiltonceramics.co.uk](http://www.davidchiltonceramics.co.uk)

---

## **B033 Moya Tosh Ceramics**



I try to express the essential moods, shades, beauties and imperfections of the countryside

where I live.

[www.moyatoshceramics.co.uk](http://www.moyatoshceramics.co.uk)

---

## **B034 Tatarek Pottery**



Hand Thrown Stoneware pieces carved freehand with Arts and Crafts inspired designs.

[www.tatarekpottery.co.uk](http://www.tatarekpottery.co.uk)

---

## **B035 Studio Brae**



Tokes Sharif handcrafts sculptural and functional objects using clay incorporating

local and foraged materials. The use of earthy tones coupled with stony and matte textures draws inspiration from Scottish landscapes.

[www.studiobrae.com](http://www.studiobrae.com)

---

## **B036 Lesley Nason Ceramics**



Porcelain wall art, decorative hand built vessels and distinctive jewellery inspired by the

fauna and flora of the British countryside.

---

## **B037 Liz O'Dwyer Ceramics**



Simple wheel thrown porcelain forms decorated with a cobalt inlaid drawing.

---

## **B038 Anna Phillips**



A colourful and expressive exploration of the vessel form.

[www.annaphillipsceramics.co.uk](http://www.annaphillipsceramics.co.uk)

---

## **B039 Katherine Taylor Ceramics**



Handcrafted ceramics with distinctive form and design, inspired by nature and the UK's

picturesque coastlines.

[www.katherinetaylorceramics.co.uk](http://www.katherinetaylorceramics.co.uk)

---

## **B040 Elly Wall Ceramics**



I make handbuilt vessel forms, and interested in the sense of scale, emptiness and

compelling visual appeal of disused architectural forms.

[www.ellywall.com](http://www.ellywall.com)

---

## Co41 Peter Hayes Sculpture



By building up layers of textured clay combined with burnishing and polishing of surfaces, I try to

achieve opposites of rough and smooth.

[www.peterhayessculpture.co.uk](http://www.peterhayessculpture.co.uk)

---

## Co42 Charlie Collier Pottery



Stoneware domestic ware. Wood and gas fired. Traditional forms incorporating

local clays and wood ashes.

[www.charliecollierpottery.com](http://www.charliecollierpottery.com)

---

## Co43 David Cooke Sculpture



I create a wide range of ceramic animal sculptures in a variety of styles, and often

incorporating other media, such as steel, wood or bronze.

[www.davidcookesculpture.com](http://www.davidcookesculpture.com)

---

## Co44 Valerie Mclean

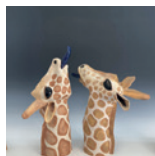


My work is inspired by the landscapes and the archaeology of the South of France.

[www.valeriemcleanceramics.com](http://www.valeriemcleanceramics.com)

---

## Co45 Sarah Michael Ceramics



Hand thrown both decorative and functional objects for house and garden. Fun, colourful and,

hopefully, thought provoking!

[www.sarahmichael.nl](http://www.sarahmichael.nl)

---

## Co46 Clare Wakefield Ceramics



Designs inspired by the ebb and flow of the sea.

[www.clarewakefieldceramics.com](http://www.clarewakefieldceramics.com)

---

## Co47 Patrick O'Donohue



Wheel-thrown and hand-built forms with expressive painterly compositions referencing

landscape and the abstraction of light and shadow.

## Co48 Oknytt Ceramics



Swedish ceramicist Hanna Salomonsson's hand built stoneware pieces are

inspired by Scandinavian nature and Nordic folklore.

[www.oknyttceramics.com](http://www.oknyttceramics.com)

---

## **Co49 David Wright Pottery**



Coiled, wood-fired stoneware vessels and boxes, sometimes including wooden lids and other materials.

[www.davidwrightpottery.co.uk](http://www.davidwrightpottery.co.uk)

---

## **Co50 David Hilton Tableware**



Range of porcelain and stoneware pots for all serving and cooking occasions. Also many

accessories for the dining table.

[www.davidhiltontableware.com](http://www.davidhiltontableware.com)

---

## **Co51 Jill Ford Ceramics**



Porcelain and black stoneware sculptures comprising of masses of tapering

tubular forms. Also wheel thrown porcelain bowls and vases.

[www.jillford.com](http://www.jillford.com)

---

## **Co52 Roger Cockram Ceramics**



Mostly individual pieces in fine porcelain, thrown and sometimes altered, based

on observations of the sea and coastline.

[www.rogercockramceramics.co.uk](http://www.rogercockramceramics.co.uk)

---

## **Do53 Tamsyn Trevorrow**



Sculptural ceramics inspired by the material effects of time on the natural world in particular the interaction of land and sea.

[tamsyntrevorrow.myfreesites.net](http://tamsyntrevorrow.myfreesites.net)

---

## **Do54 Kyra Mihailovic Ceramics**

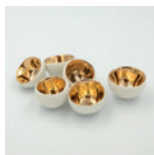


Distinctive hand-painted ceramics in porcelain and stoneware.

[www.kyraceramics.com](http://www.kyraceramics.com)

---

## **Do55 Penny Little Ceramics**



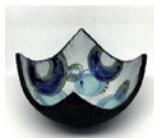
Hand-formed black and white porcelain bowls, vases and vessels lined with glamorous gold

and platinum lustres.

[www.pennylittleceramics.com](http://www.pennylittleceramics.com)

---

## **Do56 Katy O'Neil**



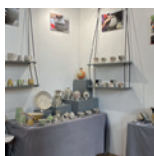
Slab formed contemporary ceramics created from black clay and impressed with found objects.

Complimented by a range of ceramic jewellery.

[www.katyoneil.com](http://www.katyoneil.com)

---

## **Do57 Mary Wright Ceramics**



I aim to retain the fluidity of the thrown clay with the use of brushes.

[www.marywrightceramics.co.uk](http://www.marywrightceramics.co.uk)

---

## Do58 Elaine King Ceramics



Elaine makes mainly handbuilt pieces in white stoneware clay, hand-painted using a palette

of oxides, slips, and underglaze colours.

[www.elainekingceramics.com](http://www.elainekingceramics.com)

---

## Do59 Meg Durham Art



Figurative ceramic sculptures and wall hangings made from stoneware and parian clays

finished with oxides and lustre.

[www.instagram.com/\\_med\\_arts/](https://www.instagram.com/_med_arts/)

---

## Do60 Rob Sollis Ceramics



Rob trained at Dartington, becoming expert in high-temperature Raku methods.

He produces experimental studio art ceramics applying 'tracking' and burnished effects to the surfaces.

[www.robsollisceramics.co.uk](http://www.robsollisceramics.co.uk)

---

## Do61 Remon Jephcott Ceramics



Ceramic Fruits, delicate pieces inspired by decay. Each sculptural piece is multi-fired and layered

with glazes, lustres and decals.

[www.remonjephcott.com](http://www.remonjephcott.com)

---

## Do62 Moonhare Ceramics



Cheery, colourful, highly decorated domestic stoneware and sculptural

pieces created using slips and engobes.

[www.moonhareceramics.co.uk](http://www.moonhareceramics.co.uk)

---

## Do63 Jenny Chan



Unique hand-built figurative sculpture with a back story.

[www.jennychanartworks.com](http://www.jennychanartworks.com)

---

## Do64 Laura Gibbs Ceramics



Cast and hand built porcelain and bonechina forms which are then saggar fired in my electric kiln

with metals and oxides.

## Do65 Kate Windibank



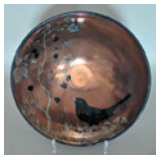
Hand-built, sculptural vessels with undulating edges, fault lines and fissures, which

explore the transformational nature of time on natural objects.

[www.firedthings.com](http://www.firedthings.com)

---

## Do66 JCJ Pottery



Brush decorated reduction fired lustreware.

[www.jcjpottery.co.uk](http://www.jcjpottery.co.uk)

---

## Do67 Leigh Pottery



Leighan produces both thrown and handbuilt pieces, focusing on simplicity, form and

function.

[www.leighpottery.co.uk](http://www.leighpottery.co.uk)

---

## Do68 Mark Smith Ceramics



Maritime sculptures combining ceramics with found and recycled materials.

[www.marksmithceramics.com](http://www.marksmithceramics.com)

---

## Do69 Marika du Plessis Art & Ceramics



Handmade ceramic quirky birds decorated with oxides and contrasting matte underglazes

and gloss. Filled with symbolism, delicate mark-making and textures to accentuate each bird's personality.

---

## Do70 Sarah Piper Ceramics



Sarah Piper's collection conveys serene strength through weathered pieces,

embodying human contradictions: calm amidst chaos, fragility intertwined with resilience.

[www.sarahpiperceramics.co.uk](http://www.sarahpiperceramics.co.uk)

---

## Do73 Robyn Hardyman Ceramics



Decorative and functional finely thrown vessels in porcelain – bowls, vases, moon jars and more – in

pared-back, elegant form.

[www.robynhardyman.com](http://www.robynhardyman.com)

---

## Do74 Charlotte Berry Pottery



Thrown and hand built, stoneware pots. Slip, paper resist and sgraffito are used to create

bold designs inspired by nature.

---

## Do75 Justine Jenner Pottery



Colourful, thrown vases and tableware using white earthenware clay. Exploring harmony

between form, function and colour.

[www.justinejennerpottery.co.uk](http://www.justinejennerpottery.co.uk)

---

## **Do76 Sophie Smith Ceramics**



Bright, colourful and whimsical earthenware ceramics. Slipcast and hand built pieces

decorated with coloured slips, brush on glazes and lustres.

---

## **Do77 Bridget Drakeford Porcelain**



Handthrown porcelain with an Eastern influence. Teapots, bowls, jugs & vases.

[www.bdporcelain.co.uk](http://www.bdporcelain.co.uk)

---

## **Do78 Elizabeth Renton Ceramics**



Elizabeth make small batches of unique Tableware and decorative pieces for the home. Blending

Stoneware and Porcelain I merge traditional and modern techniques primarily using the wheel. Creating tactile surfaces of raised dots, grooves and lines.

[www.elizabethrenton.co.uk](http://www.elizabethrenton.co.uk)

---

## **Do80 Wendy Calder Ceramics**



Red & white earthenware functional ceramics with delicate botanical surface designs,

produced by monoprint and sgraffito techniques.

[www.wendycalderceramics.com](http://www.wendycalderceramics.com)

## **Do81 Imogen Taylor Noble**



Hand built vessels and sculptural objects, using commercial and foraged clays and fired in my

wood fired train kiln.

[www.imogentaylor-noble.com](http://www.imogentaylor-noble.com)

---

## **Do82 Victoria Meadows**



Handbuilt ceramics celebrating unglazed finishes using Terra Sigillata. Saggar fired

with organic matter creating diverse, natural and unrepeatable surfaces.

[www.victoriameadows.co.uk](http://www.victoriameadows.co.uk)

---

## **Eo83 Chiu-i Wu Ceramics**



Hand built sculptural and functional stoneware created by my hands and fired in a gas kiln.

[www.chiuiwu.co.uk](http://www.chiuiwu.co.uk)

---

## **Eo84 Diane Griffin Ceramics**



Contemporary sculptures featuring contrasting textures of fine unglazed porcelain, rough organic glazes and metallic details.

[www.dianegriffin.co.uk](http://www.dianegriffin.co.uk)

## Eo85 J Bull Ceramics



Wheel thrown vessels and forms using volcanic glazes to create coastal and celestial surfaces.

[www.jonbullceramics.com](http://www.jonbullceramics.com)

## Eo86 Sara Budzik Making

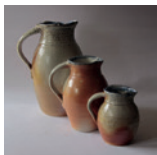


Sara creates hand-built ceramic sculpture, inspired by a desire to protect and celebrate

wildlife and the natural world.

[www.sarabudzik.com](http://www.sarabudzik.com)

## Eo87 John West



I am a maker of woodfired and soda glazed functional pottery incorporating locally found

materials into the finished item.

[www.lansdownpottery.co.uk](http://www.lansdownpottery.co.uk)

## Eo88 Steve Woodhead Ceramics

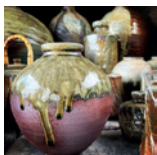


“Art for Everyday Living” - Steve makes a variety of traditional and funky pots to be used on a

daily basis in the home.

[www.stevewoodheadceramics.co.uk](http://www.stevewoodheadceramics.co.uk)

## Eo89 Shield Studio Pottery

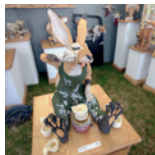


Thrown ceramics from the heart. High fire stoneware with beautiful, simple glazes, and exciting

fluid textures.

[www.shieldstudiopottery.com](http://www.shieldstudiopottery.com)

## Eo90 Garry Jones



Ceramic animals and creations to make you smile.

## Eo91 Richard Wilson Ceramics



My pots reflect the spontaneity of the slipware tradition of decoration, with coloured clays called slips

applied to the pots.

[www.rwilson-ceramics.co.uk](http://www.rwilson-ceramics.co.uk)

## Eo92 Michelle Young-Hares Ceramics



Ceramic sculptures are a combination of thrown, altered, and textured clay, multiple fired and

stoneware glazed. Inspired by natural forms.

[www.michelleyounghares.co.uk](http://www.michelleyounghares.co.uk)

## Eo93 Phil Jolley



Tactile hand-built vessels in stoneware, porcelain or a heavy grogged body whose

surfaces are an integral part of the final intention.

[www.philipjolleyceramics.co.uk](http://www.philipjolleyceramics.co.uk)

## Eo94 Di Luca Ceramics



Innovating Raku Ceramics and Sculptures for contemporary interior decors.

[www.dilucaceramics.com](http://www.dilucaceramics.com)

[www.celebratingceramics.co.uk](http://www.celebratingceramics.co.uk)

## F095 Sheila Herring



Functional thrown and handbuilt black earthenware. Surfaces decorated with free pencil line

drawings exploring repetitive patterns or suggestions of flowers.

[www.sheilaherring.co.uk](http://www.sheilaherring.co.uk)

## F096 Jan Tomei Ceramics



Wheel thrown stoneware and porcelain textured vessels.

[www.jantomeiceramics.com](http://www.jantomeiceramics.com)

## F097 Claire Lardner Burke Ceramics



Individual hand-coiled vessels capturing the quiet beauty, marks and colours of aged and weathered rocks and stone.

[www.clairelardnerburke.co.uk](http://www.clairelardnerburke.co.uk)

## F098 Fiona Booy Ceramics



Fiona's sculptural and functional creations play with bold forms and geological processes,

swirling with blended colours and clays.

[www.fionoobooyceramics.co.uk](http://www.fionoobooyceramics.co.uk)

## F099 Gilly Whittington Ceramics



Porcelain ceramics, thrown on the wheel and sometimes altered, with decoration

inspired by abstract painters.

[www.gillywhittington.com](http://www.gillywhittington.com)

## F100 Simone Brown Ceramic Artist



Abstract sculptural forms and vessels that explore a nuanced palette of mixed reclaimed clays and texture.

## F101 Sara Moorhouse



I make non-functional ceramic artworks referencing landscape scenes, through

which I explore colour theories and spatial perception.

[www.saramoorhouse.com](http://www.saramoorhouse.com)

## F102 Wendy Johnson Ceramics



Influence and inspiration from the North Atlantic coast, the juxtaposition of man-made and

natural rock formations brutally beaten by the furious, rhythmic pounding of the ocean. Structures change over time, the ocean changes every moment.

[www.wendyjohnsonceramics.co.uk](http://www.wendyjohnsonceramics.co.uk)

## **F103 Anthony Theakston Ceramics**



Stunning collection of ceramics inspired by birds.

[www.anthonytheakstonceramics.co.uk](http://www.anthonytheakstonceramics.co.uk)

## **F104 Jason Braham**



Stoneware and salt glaze, inspired by European country ware and the "Leach School".

[www.jasonbraham.com](http://www.jasonbraham.com)

## **F105 Kat Wheeler Ceramics**



High fired terra cotta pots for table, decorated with textural slips and glazed in various ash glazes.

[www.katwheeler.co.uk](http://www.katwheeler.co.uk)

## **F106 Janet Halligan Ceramics**



Trompe L'oeil sculpture ,mainly bags ,shoes and hobby boxes together with hand built

vessels and abstract sculpture inspired by landscape in stoneware.

[www.janethalligan-ceramics.co.uk](http://www.janethalligan-ceramics.co.uk)

## **F107 Sonya Wilkins Ceramics**



Ceramic vessels embodying the beauty of landscape, earth and tree formations. Mixed clays,

wild clay slips and woven wire.

[www.ceramicsinspiredbynature.com/sonya-wilkins-ceramics/](http://www.ceramicsinspiredbynature.com/sonya-wilkins-ceramics/)

## **F108 Elaine Humpleby: Arty Activist Creations**



Elaine creates Figurative Sculptures and Vessels, experimenting with found textures and

application of colour she celebrates Environments, Memories and Mythos.

## **F109 Knighton Mill Pottery**



Contemporary salt glazed country pottery, focused on the marriage of form and function.

[www.knightonmillpottery.com](http://www.knightonmillpottery.com)

## **G110 Woburn Sands Clay**



Handmade ceramics with a distinctive Art Deco influence, including Raku and Crystalline glazed pieces.

Each item is individually designed.

[www.woburnsandsclay.com](http://www.woburnsandsclay.com)

## G111 Paul-James Ceramics



My work focuses on the simplicity the raw material, revealing the natural beauty and refinement

of the clay body.

[www.pauljamesceramics.com](http://www.pauljamesceramics.com)

---

## G112 Katherine Kingdon



The illustrative nature of Katherine's work suggests an oblique, yet familiar narrative. Allow

yourself to be drawn in, question the detail, let your imagination wander.

[www.fatbellypots.art](http://www.fatbellypots.art)

---

## G113 Peter Black Ceramics



Salt glazed wheel thrown pots in porcelain and stoneware, including functional as

well as one-off decorative or sculptural pieces.

[www.peterblack.uk](http://www.peterblack.uk)

---

## G114 Julian Jardine



Julian Jardine creates unique sculptures and small limited edition pieces

based largely on endangered species.

[www.julianjardine.co.uk](http://www.julianjardine.co.uk)

---

## G115 Sally Dorrity



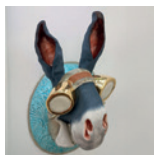
Hand built small, medium and large stoneware pieces, both functional and sculptural,

equally suitable for indoors and outside.

[www.sallydorrity.co.uk](http://www.sallydorrity.co.uk)

---

## G116 Helen Higgins Ceramics



Ornamental sculptural figurines, free standing and wall hanging, featuring a range of quirky

animals often wearing a costume or disguise, a mask, a hat, theatrical make up etc.

---

## G117 Shelton Pottery



Ken's finely thrown pottery is a canvas for Valerie's joyful free-hand painting of abstract and

floral themes.

[www.sheltonpottery.co.uk](http://www.sheltonpottery.co.uk)

---

## G118 Julie O'Sullivan



Julie presents a body of work shaped by living alongside the Thames Estuary.

Hand-built

stoneware celebrating the tactile.

[www.julieosullivan.co.uk](http://www.julieosullivan.co.uk)

---

## G119 Richard Baxter



Finely thrown porcelain pots presented in a distinctive range of vibrant, colourful

glazes. They are both functional and beautiful.

[www.richardbaxter.co.uk](http://www.richardbaxter.co.uk)

---

## G120 Paul Wearing Ceramics



Handbuilt sculptural vessels layered with multiple oxidised slips and volcanic, crawl and

barium glazes rendering textured and visually complex surfaces.

[www.paulwearingceramics.com](http://www.paulwearingceramics.com)

---

## G121 Shirley Sheppard



My work is figurative: the human form, whether on vessels in cast porcelain or hand built

sculptures, painted or glazed.

[www.shirleysheppard.co.uk](http://www.shirleysheppard.co.uk)

---

## G122 Kathryn Stevens



Sculptures for your home and garden inspired by the natural and industrial landscape of Cumbria

[www.designsbykathrynstevens.co.uk](http://www.designsbykathrynstevens.co.uk)

---

## G123 Jaroslav Hrustalenko



Geometrically stylised contemporary tableware inspired by music and dance.

[www.hrustalenko.co.uk](http://www.hrustalenko.co.uk)

---

## G124 Potteryman



Comprehensive tableware range along with sculpted garden ceramics and one off pieces.

All designed for daily use.

[www.potteryman.co.uk](http://www.potteryman.co.uk)

---

## G125 Jack Durling



Ceramic wildlife sculpture inspired the phenomena of the natural world with lustre and

porcelain embellishments.

[www.jackdurling.co.uk](http://www.jackdurling.co.uk)

---

## G126 Daniel Boyle Ceramics



Salt and ash glazed stoneware. Individual works to be explored beyond

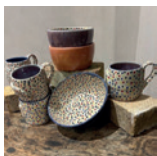
their surface.

[www.danielboyleceramics.com](http://www.danielboyleceramics.com)

---

Meet  
some of the  
well-known  
faces from a  
recent TV  
show

## H001 Andrew Macbean Ceramics



Thrown and slab built pots inspired by the seaside and woodland

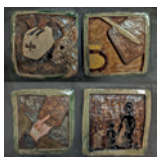
## H002 Sophie Wootton Design



Hand thrown functional tableware glazed in unique muted pastel colours, exploring the relationship between the maker and the user.

[www.sophiewoottondesign.com](http://www.sophiewoottondesign.com)

## H003 Dave Short Pottery



I make thrown vessels, hand built items and carved tiles inspired by the natural world and human activity.

[www.daveshortpottery.bigcartel.com](http://www.daveshortpottery.bigcartel.com)

## H004 Polware Pottery



Creations mostly dedicated to the kitchen.

## H005 Edward King Ceramics



Sculptural ceramics inspired by ideas of destruction and urban landscapes.

[www.studiomush.co.uk](http://www.studiomush.co.uk)

## H006 Oto Ni Pottery



A range of functional ceramics inspired by the Northern Irish coastline.

[www.otonipottery.com](http://www.otonipottery.com)

## H007 Steven Broughton Ceramics



I craft purposeful pots, believing functionality enhances beauty. Everyday items, with sentimental value, feature distinctive, ergonomic designs and intricate hand-mixed glazes.

[www.stevenbroughtonceramics.com](http://www.stevenbroughtonceramics.com)

## H008 Cadi Froehlich



Ceramic art to live with.

[www.cadifroehlich.co.uk](http://www.cadifroehlich.co.uk)

## H009 Sandypots



Jars, big bowls and wonky cups inspired by a love of powerful animals and the sea.

Adrian Bates Ceramics .....	A010	Gin Durham Ceramics.....	B026
Alchemy Tiles .....	A002	Guy Routledge Ceramics .....	A009
Alison Wear Ceramics .....	B029	Helen Higgins Ceramics.....	G116
Andrew Hazelden .....	B028	Hiro Takahashi .....	B030
Andrew Macbean Ceramics .....	H001	Imogen Taylor Noble .....	D081
Andrew Niblett Raku Potter .....	A004	J Bull Ceramics.....	E085
Anna Phillips.....	B038	Jack Durling.....	G125
Anthony Theakston Ceramics... F103		Jan Tomei Ceramics.....	F096
Bridget Drakeford Porcelain .....	D077	Jane Cox Ceramics.....	B025
Cadi Froehlich .....	H008	Jane Staniland.....	A011
Candice Coetser Ceramics .....	B027	Janet Halligan Ceramics.....	F106
Charlie Collier Pottery .....	C042	Jaroslav Hrustalenko.....	G123
Charlotte Berry Pottery .....	D074	Jason Braham.....	F104
Chiu-i Wu Ceramics .....	E083	JCJ Pottery .....	D066
Claire Lardner Burke Ceramics... F097		Jenny Chan.....	D063
Clare Wakefield Ceramics .....	C046	Jeremy Nichols Ceramics.....	A005
Craig Underhill .....	A007	Jill Ford Ceramics.....	C051
Daniel Boyle Ceramics.....	G126	John West.....	E087
Dave Short Pottery.....	H003	Judit Esztergomi Ceramics .....	B023
David Chilton .....	B032	Julian Jardine .....	G114
David Cooke Sculpture .....	C043	Julie O'Sullivan .....	G118
David Hilton Tableware.....	C050	June Dobson Ceramics .....	B015
David Wright Pottery .....	C049	Justine Jenner Pottery .....	D075
Deborah Harwood Ceramics.....	B031	Kat Wheeler Ceramics.....	F105
Di Luca Ceramics .....	E094	Kate Windibank .....	D065
Diane Griffin Ceramics.....	E084	Katherine Kingdon.....	G112
Edward King Ceramics.....	H005	Katherine Taylor Ceramics .....	B039
Elaine Humpleby:		Kathryn Stevens .....	G122
Arty Activist Creations .....	F108	Katy O'Neil.....	D056
Elaine King Ceramics.....	D058	Knighton Mill Pottery .....	F109
Elizabeth Renton Ceramics .....	D078	Kyra Mihailovic Ceramics.....	D054
Elly Wall Ceramics .....	B040	Laura Gibbs Ceramics .....	D064
Emily Dennys Ceramics.....	B017	Leigh Pottery.....	D067
Emma Baldwin Ceramics.....	B019	Lesley Nason Ceramics.....	B036
Fiona Booy Ceramics.....	F098	Liz O'Dwyer Ceramics .....	B037
Garry Jones.....	E090	Liz Watts .....	B024
Gilly Whittington Ceramics .....	F099	Lucy Morris Ceramic Art.....	B016

Marika du Plessis		Sarah Michael Ceramics.....	C045
Art & Ceramics .....	D069	Sarah Piper Ceramics.....	D070
Mark Smith Ceramics .....	D068	Sheila Herring.....	F095
Mary Wright Ceramics.....	D057	Shelton Pottery .....	G117
Meg Durham Art.....	D059	Shield Studio Pottery.....	E089
Michelle Young-Hares		Shirley Sheppard.....	G121
Ceramics.....	E092	Simon Griffiths Sculpture .....	A012
Moonhare Ceramics .....	D062	Simone Brown Ceramic Artist...	F100
Moya Tosh Ceramics.....	B033	Sonya Wilkins Ceramics.....	F107
Neil MacDonell.....	A006	Sophie Smith Ceramics .....	D076
Oknytt Ceramics.....	C048	Sophie Wootton Design.....	H002
Oto Ni Pottery.....	H006	Steve Woodhead Ceramics .....	E088
Patricia Millar Ceramics.....	A008	Steven Broughton Ceramics.....	H007
Patrick O'Donohue .....	C047	Studio Brae.....	B035
Paul Wearing Ceramics.....	G120	Studio Skellett.....	B013
Paul-James Ceramics .....	G111	Tamsyn Trevorrow .....	D053
Penny Little Ceramics.....	D055	Tatarek Pottery .....	B034
Penny Withers Ceramics .....	A003	Tim Kennedy Ceramics.....	B018
Peter Black Ceramics.....	G113	Tony Laverick Ceramics.....	A001
Peter Hayes Sculpture .....	C041	Trevor Dyer Ceramics .....	B021
Phil Jolley .....	E093	Valerie Mclean.....	C044
Polware Pottery.....	H004	Victoria Meadows.....	D082
Potteryman.....	G124	Vladka Thwaites .....	B022
Remon Jephcott Ceramics.....	D061	Wendy Calder Ceramics .....	D080
Richard Baxter .....	G119	Wendy Johnson Ceramics.....	F102
Richard Wilson Ceramics.....	E091	Woburn Sands Clay.....	G110
Rob Sollis Ceramics .....	D060		
Robyn Hardyman Ceramics .....	D073		
Roger Cockram Ceramics .....	C052		
Ruth Gibson Ceramics .....	B020		
Sally Dorrity .....	G115		
Sally MacDonell.....	A006a		
Sandypots.....	H009		
Sara Budzik Making .....	E086		
Sara Moorhouse .....	F101		

*Listing updated 04.07.24*

**Waterperry Gardens 19 – 21 July 2024**

***[www.celebratingceramics.co.uk](http://www.celebratingceramics.co.uk)***